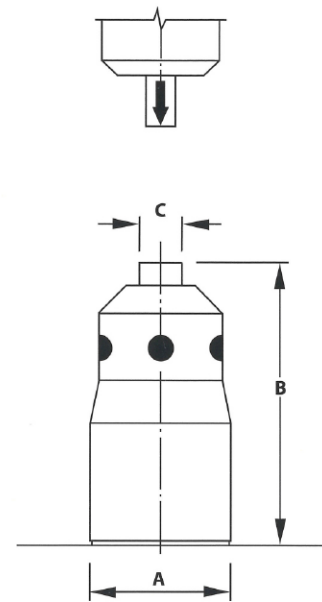


NIKO - PRESET GAGE

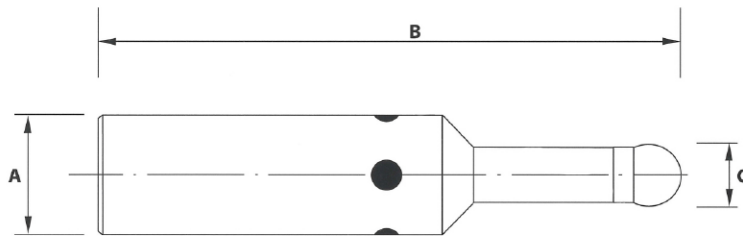
- Designed of one-piece construction which gives strength and accuracy.
- Made of high-quality tool steel hardened to 60 RC.
- Precision ground on all surfaces.
- Four highly visible lights.
- Easily replace lamp and battery.
- Repeatability T.I.R within .0002" - 0.006 mm

Inspect gage before use by making contact between body and top of gage using paper clip or metal coin.

1. Place electronic "Height Preset Gage" on table under machine spindle.
2. Make contact between tool in machine spindle and top gage. When contact is made the lamp will illuminate.



NIKO - EDGE FINDER



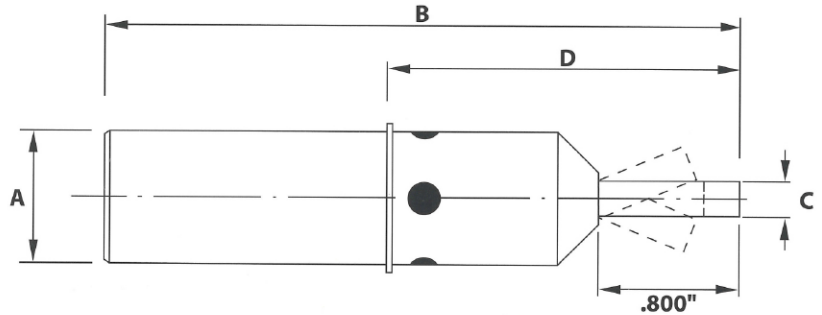
DESIGNATION	METRIC			INCHES		
	A	B	C	A	B	C
PRESET GAGE	25.4	50 ± 0.006	7.9	1.000	2.000 ± .0002	.310
EDGE FINDER S20	20 - 0.006	93	10	.750 - .0002	3.66	.400
EDGE FINDER S32	32 - 0.006	138	10	1.250 - .0002	5.44	.400

Inspect Edge Finder before use by making contact between ball and body using paper clip or metal coin.

1. Do not place Edge Finder's body below work surface. Be sure that ball center is approximately 1/32" or 1 mm. below work surface.
2. Feed carefully toward work piece. When a contact is made between ball and work piece, the lamp will illuminate.
3. This Edge Finder is damage-free with spring-sustained ball.
In case of over-travel, move backward and feed carefully.
On touch the lamp will illuminate.
4. At this position, half diameter of ball (.200") reads spindle center.

NIKO - 3D ELECTRONIC SENSOR (X, Y, Z)

- A new concept for fast and accurate “zero” finding and starting point for all three axes (x, y, z).
- Made of high quality tool steel hardened to RC60, precision ground on all surfaces.
- Operate in vertical or horizontal position.
- Over travel safety zone in all three axes: x, y - .200 inch or 5 mm
z - .200 inch or 5 mm
- Repeatability $\pm .0005$ inch or ± 0.015 mm



DESIGNATION	METRIC				INCHES			
	A	B	C	D	A	B	C	D
3D GAGE	20 - 0.006	91	6	50 \pm 0.006	.750 - .0002	3.600	.200	2.000 \pm .0002

X & Z FINDER FOR CNC TURNING CENTER

Feed tool toward probe on “x” or “z” axes. When a contact is made between tool and probe red light will illuminate.

ON “X” AXIS - Half diameter of probe (.100”) indicates exact center location.

ON “Z” AXIS - Red light indicates $2.0000" \pm .0002" / 50 \text{ mm} \pm 0.006$ from reference surface.

X, Y, Z FINDER FOR MACHINING CENTER

ON “X” AND “Y” AXIS - Feed carefully toward workpiece. When a contact is made between probe and workpiece, red light will illuminate. Half diameter of probe (.100”) indicates exact center of machine spindle.

ON “Z” AXIS - Red light indicates $2.0000" \pm .0002 / 50 \text{ mm} \pm 0.006$ from reference surface.

NIKO TRADE LTD.USA.INC.

271 Route 46 West, D107
Fairfield, NJ 07004
(973) 575-4353 • Fax (973) 575-4350
www.niko-nikcole.com

